

Global Construction & Infrastructure Legal Alliance

Content

05	<i>Introducion</i>
06	<i>Experience</i>
08	<i>Knowledge Center</i>
11	<i>History & Philosophy</i>
12	<i>Member firms</i>

LOCAL EXPERTISE FOR GLOBAL SUCCESS



Introduction

Headquartered in Paris, France, lawyers from the member firms work together to provide fully integrated legal services for all parties in the global market: government agencies, developers, industrial companies, engineers, contractors and more.

International Alliance

The Global Construction & Infrastructure Legal Alliance (GcILa) was founded in 2012 by the two international law firms Watt, Tieder, Hoffar & Fitzgerald LLP (Watt Tieder) and Frilet Société d'Avocats. The managing partners decided for the creation of this unique alliance in response to the increasing need of an international law firm network able to provide its clients with legal support, advisory skills and optimal solutions in all aspects of national and international construction and infrastructure projects.

Headquartered in Paris, France; today the legal alliance is composed of five leading international law firms, namely Frilet Société d'Avocats, Karila Société d'Avocats, PS Consulting, Watt Tieder and Breyer Rechtsanwälte. All five are frequently recognized by well-known legal guides such as Chambers and Partners, Who'sWhoLegal and The Legal 500, for outstanding work and legal services in their respective sectors; Construction & In-

frastructure, Energy, Mining, Real Estate and Insurance. As of 2012 and in joint-collaboration, the members of the Global Construction & Infrastructure Legal Alliance provide legal services and representation to national and international clients both public and private, in order to secure a flawless development and management of any project.

Alongside the extensive legal services offered by the member firms, GcILa has an elaborate knowledge center at its disposal. The knowledge center consists among other files of a collection of briefs, contract templates and publications, which can act as support material and documentation for any clients' projects. Combining the knowledge and experience of four leading construction and infrastructure law firms enables GcILa to serve any client, worldwide with a thorough approach to even the most complicated projects while at the same time creating a network that is unique in the world.

With an experienced expert team of lawyers and engineers and all four law firms operating on an international level, GcILa is a true combination of expertise, knowledge and experience, which enables the team to satisfy the needs and solve any issues that either public or private clients might have.



SUCCESSFUL PROJECTS WORLDWIDE



Developing proactive exchange and transnational synergies between leading experts from different legal systems and sectors is one of Gcila's core missions. This international alignment allows us to transition effortlessly across different countries and legal frameworks.

Laurent Karila
Karila Société d'Avocats

40 years of experience in over 80 countries across the globe.

Support from Start to Finish

The Global Construction & Infrastructure Legal Alliance (GciLA) and its member firms manage billion dollar projects across the globe from start to finish. Whether in Asia, Western Africa, Central Europe or North America, our experienced teams accompany our clients throughout the entire project and legal process.

GciLA's member firms have worked extensively with a large variety of clients ranging from private contractors over multinational companies to governments and other public entities in matters involving institutions, public-private partnerships and large corporations. Recognizing the international scope of the project and incorporating the local knowledge attained through several decades of experience is what makes GciLA's service portfolio truly unique.

More than 40 years of experience in over 80 different countries, dealing with both civil and common law, is the foundation on which GciLA's excellence is built. Best practices developed in one country or region are seamlessly integrated in other countries or regions. Effective legal advice requires the integration of local laws and regulations, day to day practice, and international best practices including international case law and arbitration precedents. The experience and ability of GciLA to provide this kind of advice in an integrated manner and with a multilingual and cross-cultural team is second to none.

The guiding principle behind GciLA is that no single multi-disciplinary law firm, no matter how large, could have true experts in the highly specialized areas of construction, infrastructure and mining law in more than a few jurisdictions.

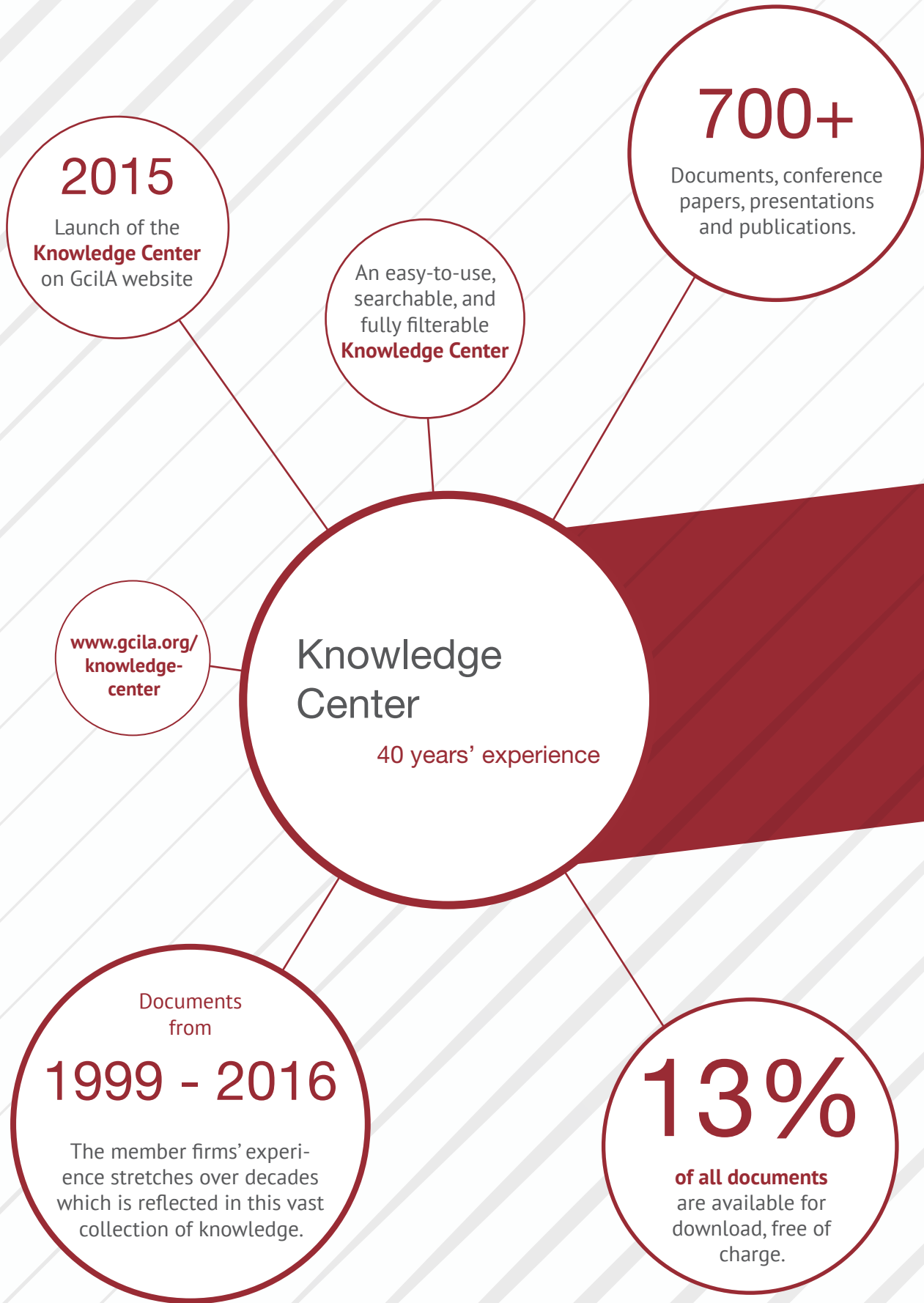


Marc Frilet

Head of the Management Committee

Sharing our expertise with our clients and helping them to succeed in their projects has always been the primary mission of the Alliance.

A handwritten signature in black ink, appearing to read 'Marc Frilet'.





THE ONLY SOURCE OF KNOWLEDGE IS EXPERIENCE

The Gcila Knowledge Center

Gcila has made a unique effort to organize an integrated Knowledge Center addressing the most important issues in each area of practice by aggregating the experience of Gcila practitioners on a numerous and diverse questions which mirror the diversity of their expertise.

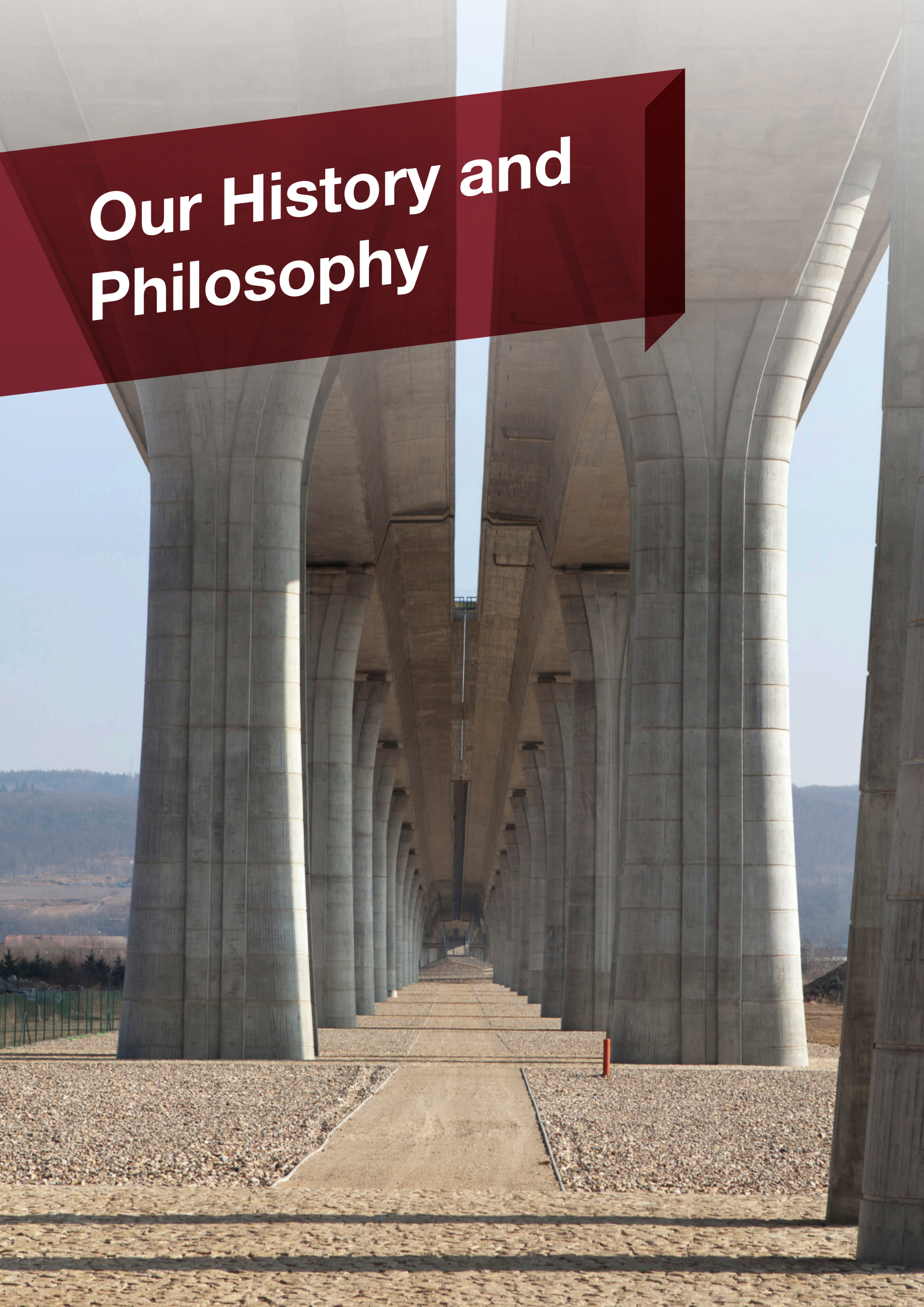
The Knowledge Centre outcome is the result of several steps all essential for delivering a new level of operational and often innovative knowledge. It is much more than a simple database or traditional legal resource center. The starting point is for Gcila practitioners to identify relevant information in addition to their own expertise, then to develop a contextual

approach permitting to prioritize information before summarizing the same. They further exchange with stakeholders, industry and peers before formulating best practices. Those best practices are designed in such a way that the resulting 'knowledge' is easy to understand and use in practice.

The Gcila Knowledge Center is firstly designed for being a living platform internal to Gcila for information which are not in the public domain or which contain some proprietary information. When this is not the situation, the headings of the issues being part of the Gcila Knowledge Center are published on the Gcila website.

Several of the key publications, conference papers, Powerpoints and other documents in each of Gcila's area of practice can be downloaded free of charge at gcila.org/knowledge-center.

Our History and Philosophy



Our beliefs and business ethics

The Global Construction & Infrastructure Legal Alliance (GciLA) was founded in recognition of the need to provide the industry and public authorities with expert legal advice in the field of construction, infrastructure and mining law in major markets.

Headquartered in Paris, France, lawyers from the member firms work together to provide fully integrated legal services for all parties in the global market: government agencies, public and private financiers of construction projects, developers, industrial companies, engineers, contractors and suppliers. Clients reside in a variety of different sectors, including construction, infrastructure, mining, energy, and more.

In addition to providing legal representation, GciLA documentation center is a repository of contract forms, briefs, articles, monographs, and other writings on construction, infrastructure and mining law. GciLA also provides public seminars and in-house training programs in the areas of its expertise. The

constituent members are leading practitioners from their respective jurisdictions. While each firm retains its independence, GciLA allows them to bring their expertise together as needed for each individual project.

The guiding principle behind GciLA is that no single multi-disciplinary law firm, no matter how large, could have true experts in the highly specialized areas of construction, infrastructure and mining law in more than a few jurisdictions. Moreover, the leading specialist firms in particular jurisdictions could not expand into all the markets where their expertise was needed in sufficient time to meet demand. The traditional solution of a referral network, although helpful, did not meet the need of coordinated expertise and inclusive advice so needed on major projects in our global world. The need for a centrally located and managed network became obvious and we believe will serve the interests of the construction and infrastructure development industry at more than competitive rates.

Since its founding day in 2012, the Global Construction & Infrastructure Legal Alliance has made tremendous projects happen all across the globe.

2014

Strong beginnings

The partners published articles in leading publications, shared their expertise at conferences & workshops, and presided over the successful launch of a new website and a comprehensive social media presence across four platforms, namely Twitter, LinkedIn, Google+ and Facebook.

2015

International Cooperation

GciLA members are already participating in several working groups for large-scale international projects including: The UNECE Centre of Excellence, The CICA IFEJI working group for concession and other PPP, and The OECD MENA working group on infrastructure and PPP

2016

Growth on all fronts

With the addition of Breyer Rechtsanwalte to the Alliance, GciLA adds yet another largely successful law firm to its circle of members. In addition, GciLA launches its brand new Knowledge Center on its website that aggregates over 700 documents, conference papers, articles and powerpoints.

“Excellent to be finally part of a no-nonsense alliance actually dedicated to providing expert construction law services. GciLA is unique, it offers an unparalleled depth of international construction law expertise from Common law across the Atlantic [North America] through to Napoleonic and now Germanic Civil code. All our members ever do is work on construction and infrastructure around the globe so clients will get the best of the best in construction.” - Wolfgang Breyer (Breyer Rechtsanwalte)



A TRULY GLOBAL ALLIANCE

The Members

GcILA is composed of five leading international law firms, namely Frilet Société d'Avocats, Karila Société d'Avocats, PS Consulting, Watt Tieder and Breyer Rechtsanwälte

Frilet – Société d'Avocats is a France-based law firm that specializes in international investment as well as the construction, infrastructure, and mining sectors. Founded in 1998 the legal and tax team of Frilet is primarily advising on complex projects and their development and implementation in the infrastructure, utility, PPP, oil and gas, and mining sector above a certain threshold.

FRILET
SOCIÉTÉ D'AVOCATS

This includes joint venture and M&A of all kind, privatization, structured

finance, ADR, and arbitration. Frilet assists on a regular basis private sector companies, consortiums as well as governments and multilaterals.

Watt, Tieder, Hoffar & Fitzgerald, LLP offers knowledgeable and practical legal representation world-wide. According to Chambers, clients choose Watt Tieder because they “want to hire the best.” Watt Tieder is also lauded by Chambers as “undoubtedly the go-to firm.”



Since its founding in 1978, Watt Tieder has grown considerably in size and depth. Today Watt, Tieder houses several dozen attorneys in six offices as well as in-house experts. The lawyers of this US-based law firm are regularly top-ranked by Best Lawyers, Chambers USA, and the Legal 500 US. Recognized

for its expertise, Watt Tieder provides their extraordinary services for a wide range of clients including public and private owners, sureties, as well as general, specialty, and government contractors. Watt Tieder's clients include many Engineering News Record Top 400 contractors and Top 500 design firms, as well as a mix of midsize and small companies.

Established in 1963, **Karila Société d'Avocats** is a renowned French law firm specializing in construction and insurance law. Karila's clients include insurers, construction companies, developers, occasional and financial contracting authorities, syndicates of co-ownership, property managers, public institutions and local authorities.

karila.
Société d'avocats



The firm's dedicated approach to construction and insurance law on the one hand, and real estate law on the other, allows its clients to benefit from an immediate awareness of the difficulties encountered throughout the process of construction and the obtaining of insurance, and allows the firm to provide wider and more creative legal advice during the early stages of the construction process, from its initial inception to its completion.

PS Consulting is a globally active firm in the construction, infrastructure, energy, and industrial sectors with headquarters in Paris, France. The firm is led by James Perry and Geoffrey Smith, two highly qualified lawyers and engineers with a combined experience of over 60 years in their respective areas of expertise.

Using the extensive experience and the double background as lawyers and engineers, PS Consulting is able to provide its clients with a unique understanding of even the most complex

construction projects and can thus offer the best possible solutions.



Their strong focus on dispute resolution and claims management has established them as one of the top addresses worldwide for any type of management and negotiation within this practice. PS Consulting's experience stretches over 40 countries and 6 continents and has led them to work on high profile and highly complex projects such as the Petronas Towers in Malaysia or a multi-billion dollars mass-housing project in Caracas, Venezuela.

Breyer | Rechtsanwälte ("Breyer") is a German international law firm dealing exclusively in the field of Construction and Infrastructure Law being one of the only specialist Construction Law

firms with offices located across Europe (Germany, Austria and Romania).

From pumped storage power plants and wind farms to office towers and manufacturing plants, Breyer continues to work on the largest (and most prestigious) major projects both nationally (Germany) and internationally, throughout Europe, Middle East and North Africa through to Asia and North America. Breyer's leading Construction Law team advises some of Germany's largest contractor companies, not to mention employers, project developers, international companies and world renowned architects and engineering firms from procurement and tendering through to completion and disputes resolution.

BREYER | RECHTSANWÄLTE

All five members are frequently recognized by well-known legal guides such as Chambers and Partners, Who'sWhoLegal and The Legal 500, for outstanding work and legal services in their respective sectors; Construction & Infrastructure, Energy, Mining, Real Estate and Insurance.



Get in touch

91, Rue du Faubourg Saint-Honoré
75007 Paris, France

Ph. +33 (0)1 44 71 35 97
email: contact@gcila.org
www.gcila.org